

PROMAC

LED LUMINAIRES

KUC2-160w & 200w

A heavy-duty, multipurpose LED panel designed for floodlighting and spotlighting applications. Available with a range of power supply, optic and colour temperature options to precisely suit your requirements. Recommended for installation on lighting towers, mobile plant, buildings, processing plant and equipment or pole mount for area lighting. IP67 rated and guaranteed for five years on fixed installations, KUC2 is fully serviceable if damaged.



5 year warranty

Every fixture is backed by full factory warranty, covering every part against manufacturing defects and guaranteeing performance.



Fully serviceable

Each component can be repaired or replaced separately in the case of damage or failure, keeping your maintenance costs down.



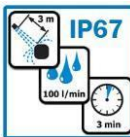
Energy efficient

Typical energy consumption reduced by 60% when compared to HID or metal halide fixtures. 50,000 hour expected life reduces maintenance costs.



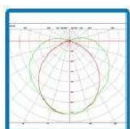
Colour temperatures

Different lighting applications call for either warmer or cooler colour temperatures. Fixtures can be supplied in 2700K, 3000K, 4500K or 5500K.



IP67 rated

Heavy-duty design for demanding applications – impact resistant, IP67 rated against water and dust ingress.



Multiple power & lens options

Choose from 240v AC, 48vDC or 24v DC to suit mains power installations, mobile plant or vehicle installation. Beam type can be modified with replacement lenses.

KUC2-200w fixture for floodlight, high-bay and internal lighting applications. 24v DC version for installation on mobile plant.



INTERNATIONAL OFFICE

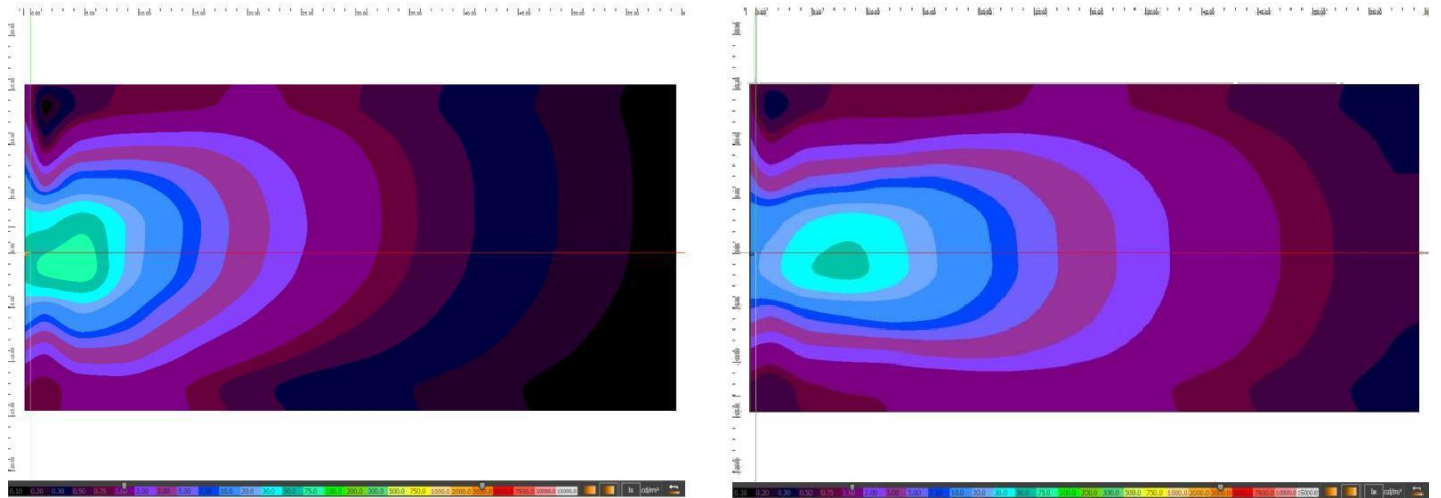
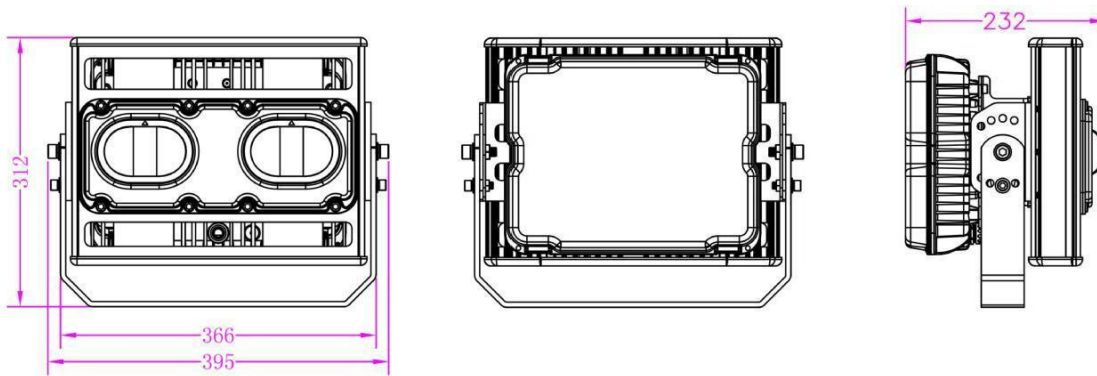
A: 60 Kurnall Road, Welshpool WA 6106 | T: +61 8 6254 1800
E: sales@promacinternational.com | W: www.promacinternational.com



www.promacinternational.com

TECHNICAL SPECIFICATIONS

Model	KUC2-C160-DC24 LED	KUC2-C200-DC24 LED	KUC2-C200-AC240 LED		
Rated power	160w (±5%)	200w (±5%)	200w (±5%)	Protection standard	IP67
Operating voltage (Freq.)	DC18-54v	DC18-54v	AC 95~265V, 50/60Hz	Standard Colour Temp.	5000K
Input Current	16.85A~4.85A 6.67A (24Vdc inupt)	21.05A~6.06A 8.33A (24Vdc input)	2.1A~0.75A 0.83A (240VAC inupt)	Life Expectancy	LM70 @ 50,000 hours
Power factor	N/A	N/A	>0.9 (AC)	Warranty	Up to 5 years warranty
Luminous Flux	18,400~19,200LM	23,000~24,000LM	23,000~24,000LM	Dimensions (mm)	301 x 382 x 248
Performance measured @	-30 ^o C to +50 ^o C	-30 ^o C to +50 ^o C	-30 ^o C to +50 ^o C	Mount height (m)	≥7m
LED	CITIZEN LED	CITIZEN LED	CITIZEN LED	Lens	B B1
	80W(±5%), x2pcs, 30~36Vdc	100W(±5%), x2pcs, 50~54Vdc	100W(±5%), x2pcs, 50~54Vdc	Weight (kg)	10.0
Driver	CS250DC x 1pc	CS250DC x 1pc	HLG-240H x 1pc		



CERTIFICATION

SAA certification
AS/NZS IEC 61347.2.13:2013
Lamp control gear - Particular requirements for DC. or AC supplied electronic control gear for LED modules (IEC 61347-2-13, Ed.1.0 (2006) MOD)

AS/NZS 60598.2.5:2002
Luminaires - Particular requirements - Floodlights (IEC 60598.2.5:1998, MOD)



Certified for use in EU countries



ACMA compliant



Production Management



No harmful substances

Specification subject to change

In keeping with our policy of continuous improvement, PROMAC reserves the right to modify our designs and specifications at any time, without notice.

INTERNATIONAL OFFICE

A: 60 Kurnall Road, Welshpool WA 6106 | T: +61 8 6254 1800
E: sales@promacinternational.com | W: www.promacinternational.com



www.promacinternational.com